

AXE Equipment The Dominator



Model SW-40G-HT

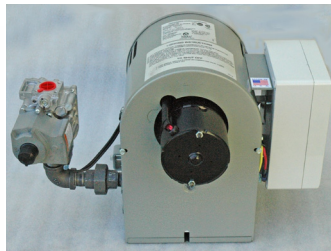


Model SW-40G-HT

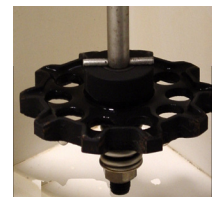
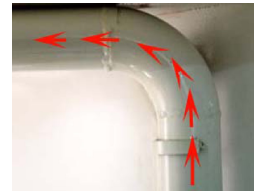
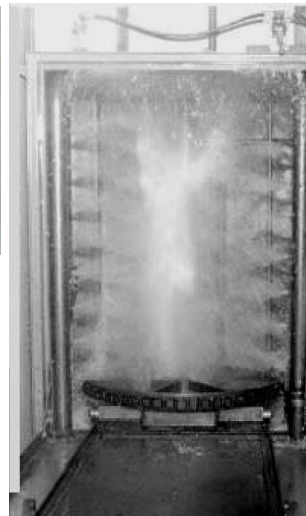
Since 1984 The Dominator has been satisfying customers worldwide. Its 28"x 40" working capacity and 1000 lb weight capacity will accommodate a host of truck, passenger car, and industrial applications. Standard equipment on the Dominator SW-40 features pneumatic door clamps, built in hot tank, and a powerful 7.5 hp pump motor flowing 100 gallons per minute of hot cleaning solutions for fast and efficient cleaning.



The Dominator like all AXE Spraywashers incorporates a spring loaded Lay down Door that makes loading and unloading a snap, and keeps the shop floor much cleaner and drier.



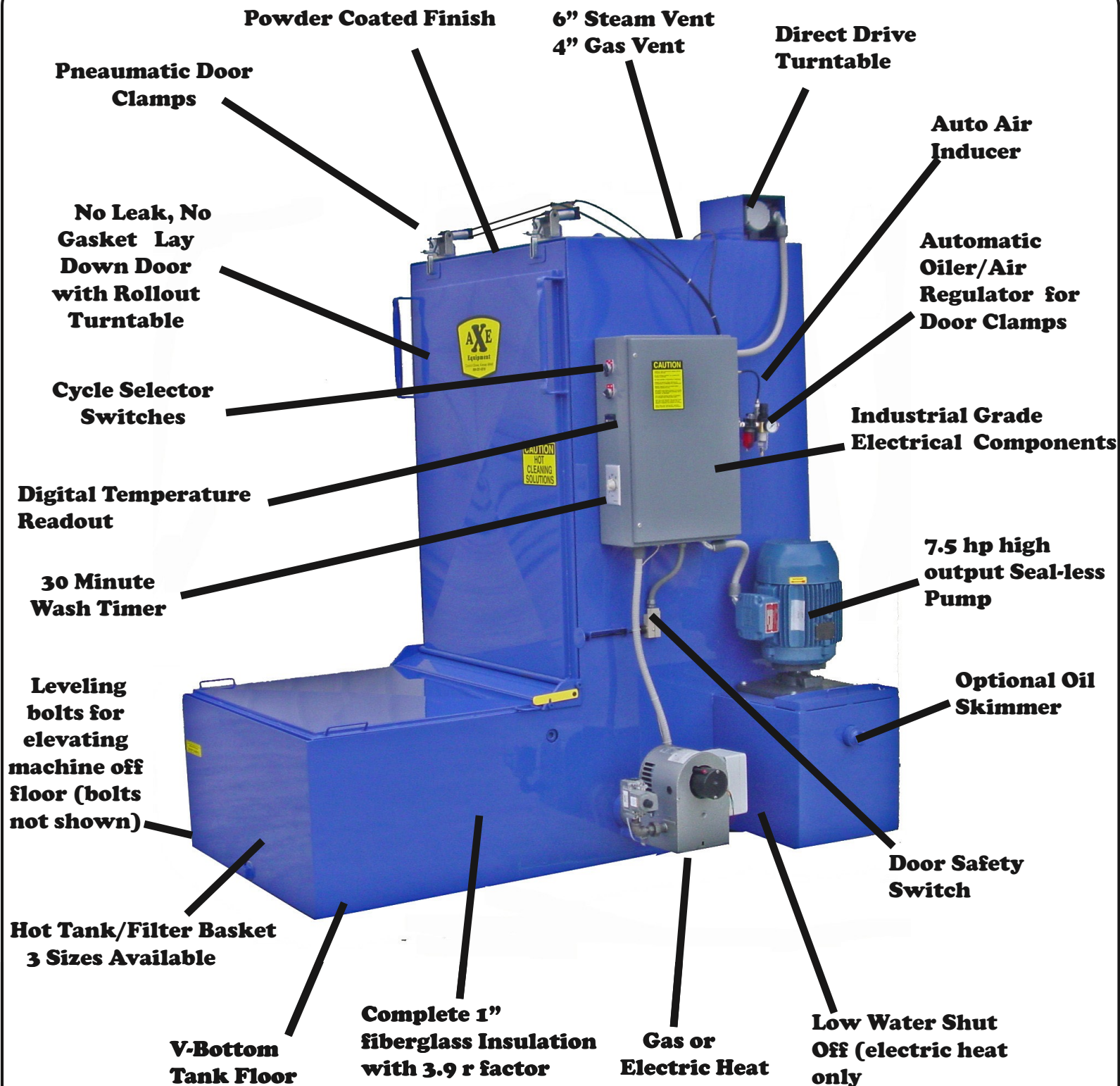
If gas heat is your preference you will like our exclusive state of the art power gas burners. Our power gas burner design puts all the components outside the fire box and away from heat. Components last longer, service is easier and maintenance cost reduced, in addition all sensitive electronics are placed inside a Vapor tight box to eliminate any malfunctions due to moisture.



Full 360 degree manifold is constructed from 2" tubing and designed with radius elbows for high performance water flow. The powerful 7.5 hp pump pushes 100 gallon per minute of hot water through 20 perfectly placed nozzles for fast and efficient cleaning, and in order to keep a consistent and long running drive system AXE Equipment incorporates a gear driven drive system with a built in safety clutch.

Call or Click

800-251-0018/www.axeequipment.com



AXE Equipment
1040 N. Union
Council Grove, KS 66846
www.axeequipment.com
perry@axeequipment.com



1-800-251-0018

For Quality and Efficiency Look To AXE

MACHINE SPECIFICATIONS

*Specifications subject to change without notice.

MODEL	SW-40R-LIGHT	SW-40R	SW-40HT	SW-40EX
WORK CAPACITY				
HEIGHT	40"	40"	40"	40"
TURNTABLE DIA.	28"	28"	28"	28"
LOAD WEIGHT CAPACITY	1,000 LBS	1,000 LBS	1,000 LBS	1,000 LBS
FLOOR SPACE REQUIRED				
HEIGHT	81"	81"	81"	81"
WIDTH	57"	57"	57"	73"
LENGTH: DOOR OPEN	86"	86"	86"	86"
DOOR CLOSED	57"	57"	68"	68"
TURNTABLE HEIGHT (ABOVE FLOOR)	30"	30"	30"	30"
SHIPPING WEIGHT	1445 LBS	1,900 LBS	2,100 LBS	2,300 LBS
CLEANING SYSTEM				
SOLUTION CAPACITY	110 gals.	110 gals.	140 gals.	160 gals
PUMP MOTOR	7.5 HP	7.5 HP	7.5 HP	7.5 HP
PUMP OUTPUT	75 psi @ 100 gpm	75 psi @ 100 gpm	75 psi @ 100 gpm	75 psi @ 100 gpm
SPRAY NOZZLES	20 alternating	20 alternating	20 alternating	20 alternating
FILTER SCREEN	1200 sq."	1200 sq."	1450 sq."	2530 sq."
CABINET CONSTRUCTION				
GAUGE STEEL	12 gauge	12 gauge	12 gauge	12 gauge
INSULATION	N/A	1" fiberglass	1" fiberglass	1" fiberglass
STEAM VENT	6"	6"	6"	6"
GAS VENT	4"	4"	4"	6"
HEAT SOURCE				
ELECTRIC ELEMENT	12 kw	12 kw	12 kw	15 kw
GAS BURNER	100,000 BTU	100,000 BTU	100,000 BTU	150,000 BTU
HOT TANK BASKETS				
WIDTH (I.D.)	13"	13"	24"	24"
LENGTH (I.D.)	34"	34"	34"	55"
DEPTH (I.D.)	11"	11"	11"	11"
ELECTRICAL REQ.				
PUMP MOTOR 3 PHASE	208/ 230/ 460 21 18 9.4 amps	208 / 230 / 460 Volts 21 18 9.4 Amps		
ELECTRICAL HEAT 3 PHASE	(12 KW) 208/230/460 Volts 33-29-17 Amps	(12 KW) 208/230/460 Volts 33-29-17 Amps	(12 KW) 208/230/460 Volts 33-29-17 Amps	(15 KW) 208/230/460 Volts 41-37-19 Amps
*ELECTRICAL OPTIONS				
PUMP MOTOR 1 PHASE	230 Volts, 33 Amps	230 Volts, 33 Amps		
ELECTRIC HEATER 1 PHASE	(12 KW) 230 Volts 52 Amps	(12 KW) 230 Volts 52 Amps	(12 KW) 230 Volts 52 Amps	(15 KW) 230 Volts 65 Amps
STANDARD EQUIPMENT				
LOW WATER SWITCH	ELECTRIC HEAT ONLY		ELECTRIC HEAT ONLY	
DUAL 7 DAY TIMERS	STANDARD		STANDARD	
DIGITAL TEMP CONTROLLER	STANDARD		STANDARD	
HEAD RACK/CRANK RACK	STANDARD		STANDARD	
AUTO AIR INDUCER	STANDARD		STANDARD	
SHORT CIRCUIT PROTECTION	STANDARD		STANDARD	
THERMAL PROTECTION	STANDARD		STANDARD	
LAY DOWN DOOR/SEALESS	STANDARD		STANDARD	
V-BOTTOM FLOOR	STANDARD		STANDARD	
BUILT IN HOT TANK	STANDARD		STANDARD	
MOISTURE PROOF ELECTRONICS	STANDARD		STANDARD	
360 DEGREE MANIFOLD	STANDARD		STANDARD	
PNEUMATIC DOOR CLAMP	N/A		STANDARD	
WARRANTY	STANDARD		ONE YEAR	
1" INSULATION	N/A		STANDARD	
OPTIONS				
28" TURNTABLE BASKET	OPTIONAL		OPTIONAL	
480 VOLTS 3 PHASE	OPTIONAL		OPTIONAL	
MANUAL RINSE CYCLE	OPTIONAL		OPTIONAL	